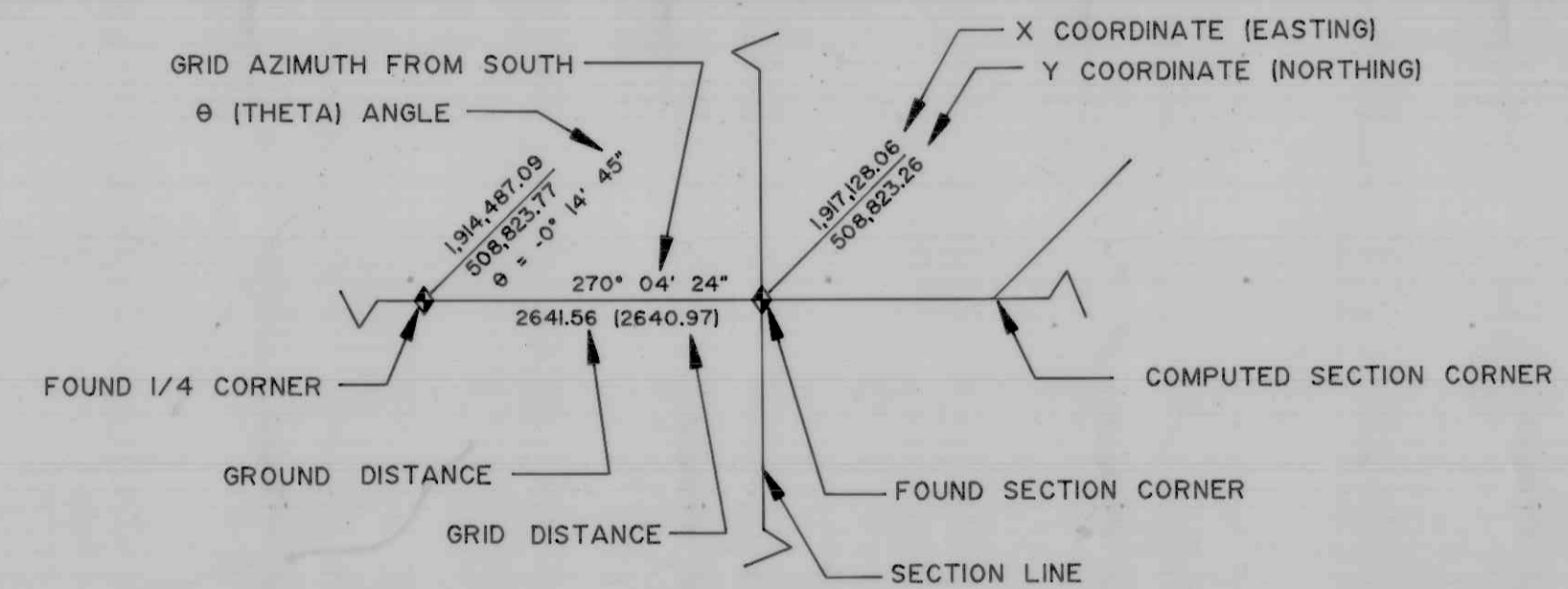


STATE COORDINATE
&
DEPENDENT RESURVEY
OF A PORTION OF
TOWNSHIP II NORTH, RANGE I WEST
Salt Lake Base and Meridian

ALL AZIMUTHS AND COORDINATES SHOWN ARE BASED ON THE UTAH STATE COORDINATE SYSTEM, LAMBERT CONFORMAL PROJECTION, UTAH NORTH ZONE, NORTH AMERICAN 1927 DATUM.
METHODS AND SPECIFICATIONS CONFORM TO SP 235, THE UTAH STATE COORDINATE SYSTEM, AND THE UNITED STATES COAST AND GEODETIC SURVEY.
THE COORDINATES SHOWN WERE TRANSFERRED BY TRAVERSE OR TRIANGULATION FROM THE FOLLOWING UNITED STATES COAST AND GEODETIC SURVEY STATIONS: CROW, CURVE, LOGAN AIRPORT, AND NEWTON.

LEGEND



SECTION TIES, ORIGINAL GENERAL LAND OFFICE OR BUREAU OF LAND MANAGEMENT SURVEY NOTES, TRAVERSES, CALCULATIONS, TIES TO TRAVERSE POINTS, ETC. USED IN OBTAINING THIS INFORMATION ARE AVAILABLE IN THE CACHE COUNTY SURVEYOR'S OFFICE.

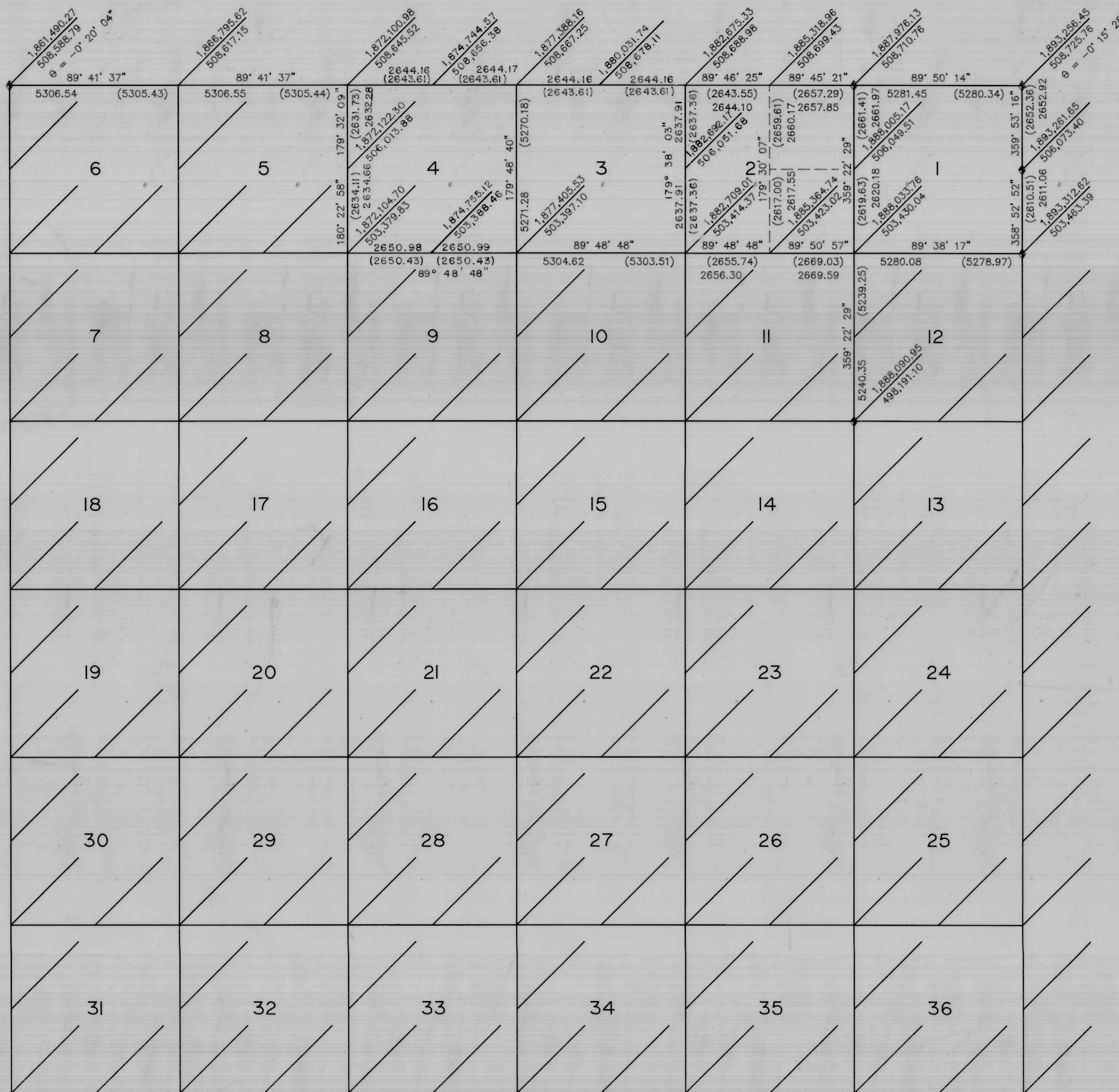
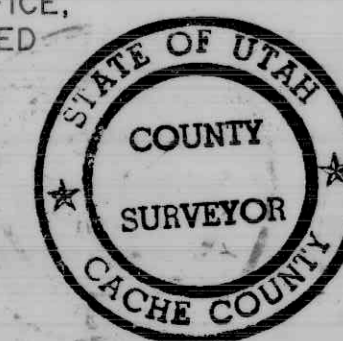
ALL SECTION CORNERS WERE ESTABLISHED AND VERIFIED PRIOR TO RESURVEY WORK ACCORDING TO THE RULES ESTABLISHED BY THE BUREAU OF LAND MANAGEMENT.

GRID AZIMUTHS AND DISTANCES BETWEEN CORNERS NOT SET ARE FOR REFERENCE ONLY.

OFFICE OF THE CACHE COUNTY SURVEYOR

THE INFORMATION SHOWN ON THIS PLAT IS IN STRICT CONFORMITY TO THE FIELD NOTES ON FILE IN THE OFFICE OF THE COUNTY SURVEYOR, HAVING BEEN EXECUTED IN ACCORDANCE WITH THE REQUIREMENTS OF THIS OFFICE, AND THIS PLAT IS HEREBY APPROVED AND ACCEPTED THIS 6 DAY OF DECEMBER, 1988

[Signature]
CACHE COUNTY SURVEYOR



REVISIONS & ADDITIONS

NO	DATE	BY	NOTES	APPROVED
1	7/20/89	DHM	ADDED COORDINATES FOR 1/4 CORNERS AND REVISED DATA BASED ON EVIDENCE RECOVERED WHEN CORNERS WERE MONUMENTED	

NOTES

GEODETIC AZIMUTH = GRID AZIMUTH + θ

θ = ANGLE BETWEEN GRID NORTH AND GEODETIC MERIDIAN

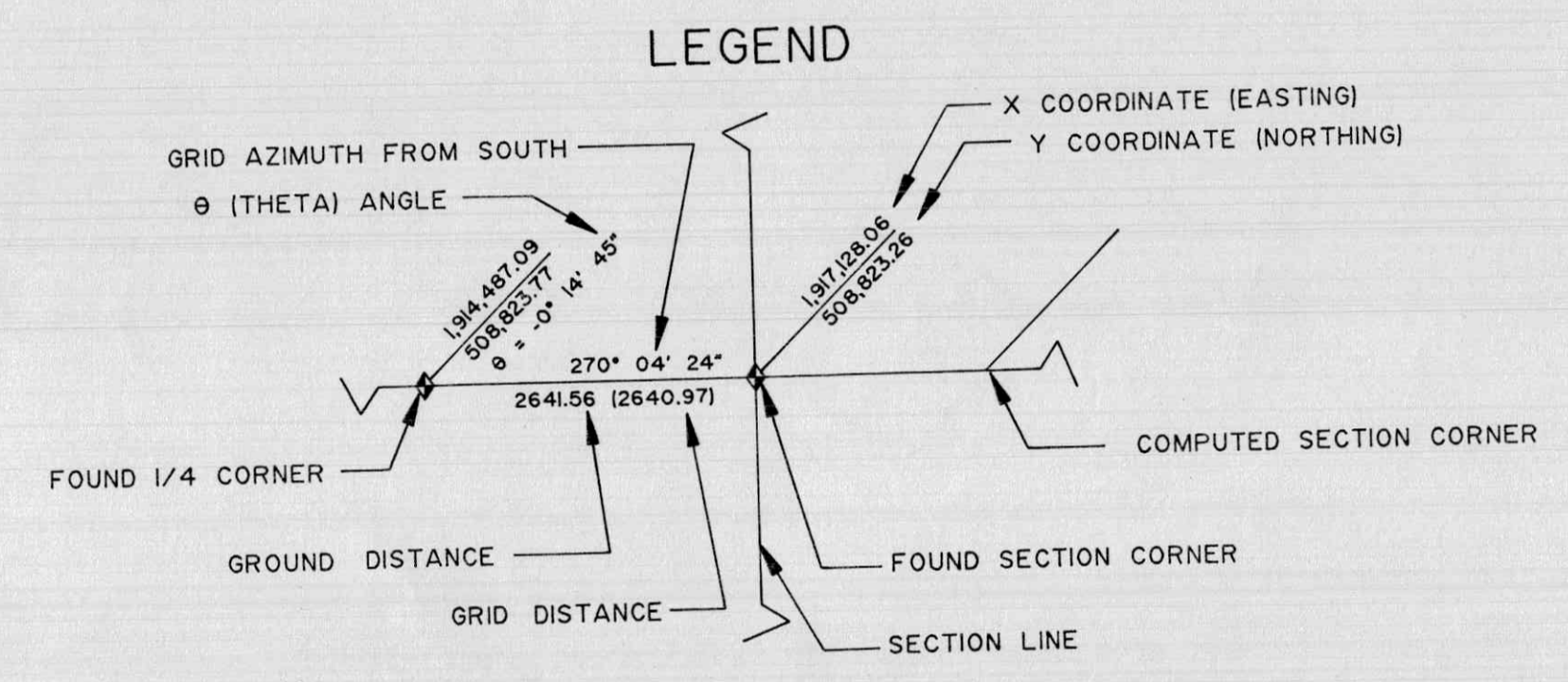
GRID DISTANCE \times 1.00020955 = GROUND DISTANCE

◆ FOUND CORNER

STATE COORDINATE
&
DEPENDENT RESURVEY
OF A PORTION OF
TOWNSHIP II NORTH, RANGE I WEST
Salt Lake Base and Meridian

ALL AZIMUTHS AND COORDINATES SHOWN ARE BASED ON THE UTAH STATE COORDINATE SYSTEM, LAMBERT CONFORMAL PROJECTION, UTAH NORTH ZONE, NORTH AMERICAN 1927 DATUM. METHODS AND SPECIFICATIONS CONFORM TO SP 235, THE UTAH STATE COORDINATE SYSTEM, AND THE UNITED STATES COAST AND GEODETIC SURVEY.

THE COORDINATES SHOWN WERE TRANSFERRED BY TRAVERSE OR TRIANGULATION FROM THE FOLLOWING UNITED STATES COAST AND GEODETIC SURVEY STATIONS: CROW, CURVE, LOGAN AIRPORT, AND NEWTON.



SECTION TIES, ORIGINAL GENERAL LAND OFFICE OR BUREAU OF LAND MANAGEMENT SURVEY NOTES, TRAVERSES, CALCULATIONS, TIES TO TRAVERSE POINTS, ETC. USED IN OBTAINING THIS INFORMATION ARE AVAILABLE IN THE CACHE COUNTY SURVEYOR'S OFFICE.

ALL SECTION CORNERS WERE ESTABLISHED AND VERIFIED PRIOR TO RESURVEY WORK ACCORDING TO THE RULES ESTABLISHED BY THE BUREAU OF LAND MANAGEMENT.

GRID AZIMUTHS AND DISTANCES BETWEEN CORNERS NOT SET ARE FOR REFERENCE ONLY.

OFFICE OF THE CACHE COUNTY SURVEYOR

REVISIONS & ADDITIONS				
NO	DATE	BY	NOTES	APPROVED
1	7/20/89	DHM	ADDED COORDINATES FOR 1/4 CORNERS AND REVISED DATA BASED ON EVIDENCE RECOVERED WHEN CORNERS WERE MONUMENTED	

NOTES

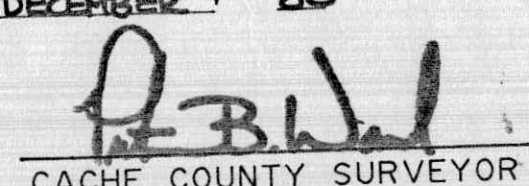
GEODETIC AZIMUTH = GRID AZIMUTH + θ

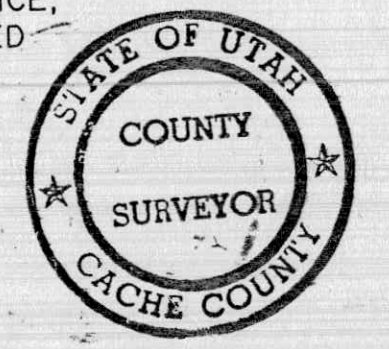
θ = ANGLE BETWEEN GRID NORTH AND GEODETIC MERIDIAN

GRID DISTANCE × 1.00020955 = GROUND DISTANCE

◆ FOUND CORNER

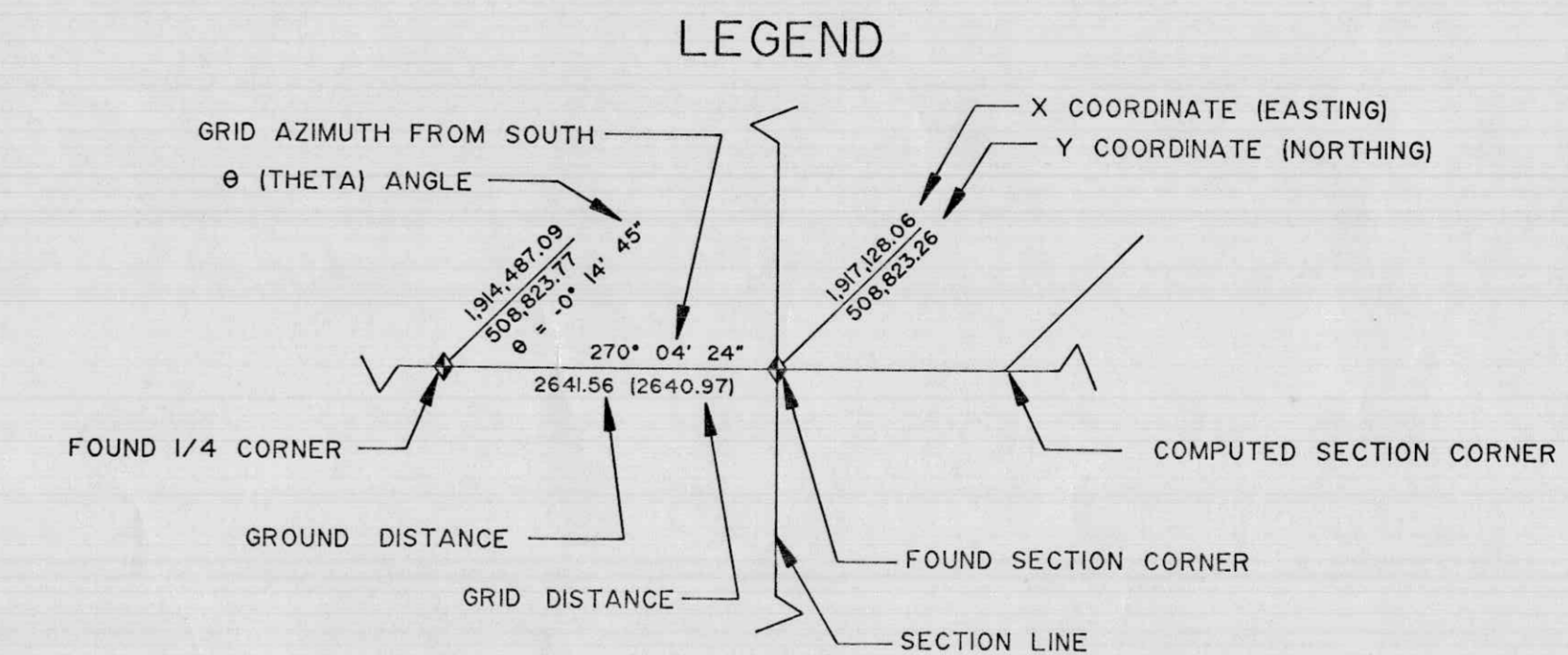
THE INFORMATION SHOWN ON THIS PLAT IS IN STRICT CONFORMITY TO THE FIELD NOTES ON FILE IN THE OFFICE OF THE COUNTY SURVEYOR, HAVING BEEN EXECUTED IN ACCORDANCE WITH THE REQUIREMENTS OF THIS OFFICE, AND THIS PLAT IS HEREBY APPROVED AND ACCEPTED THIS 6 DAY OF DECEMBER, 1988


 CACHE COUNTY SURVEYOR



STATE COORDINATE
&
DEPENDENT RESURVEY
OF A PORTION OF
TOWNSHIP II NORTH, RANGE I WEST
Salt Lake Base and Meridian

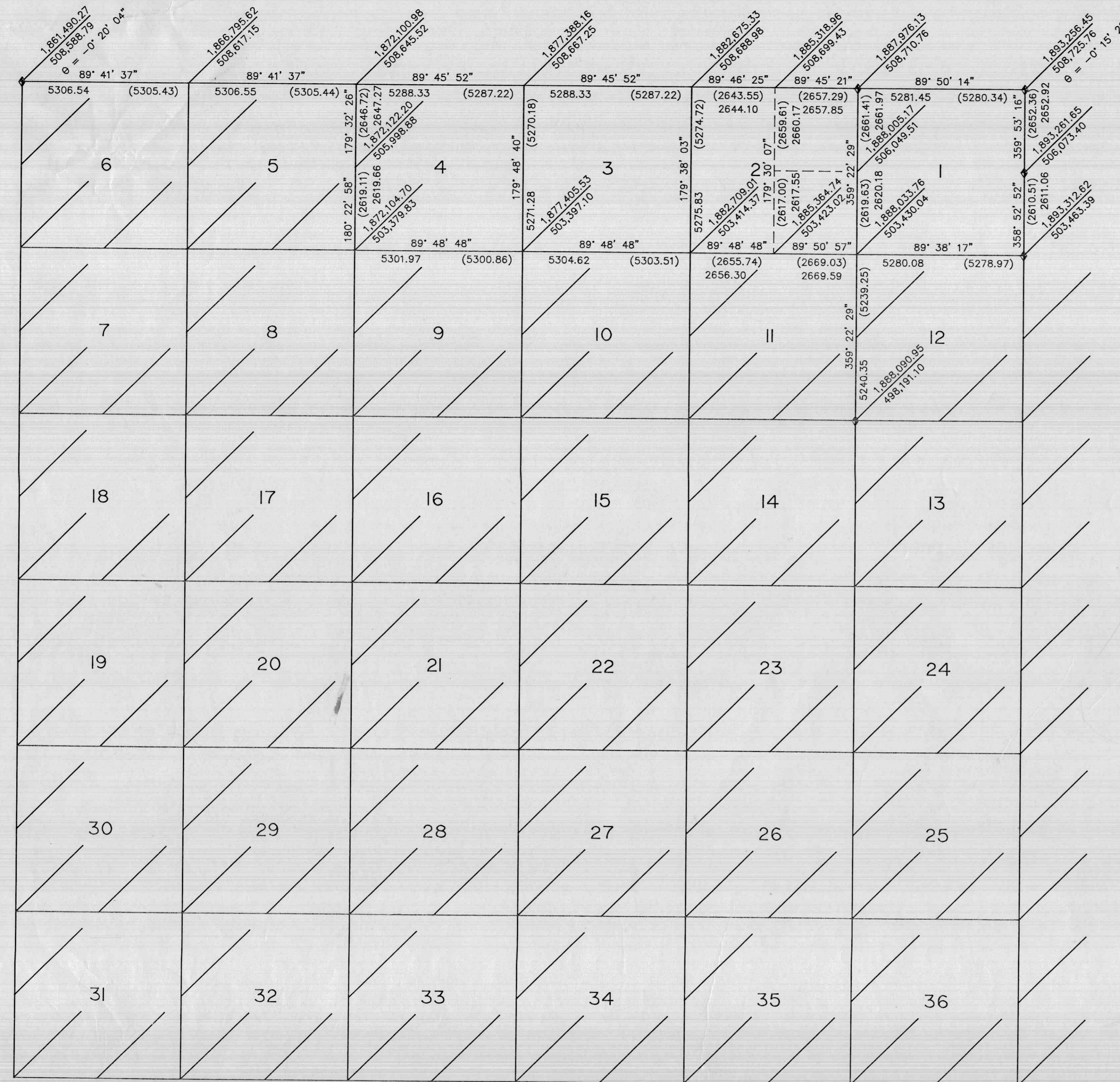
ALL AZIMUTHS AND COORDINATES SHOWN ARE BASED ON THE UTAH STATE COORDINATE SYSTEM, LAMBERT CONFORMAL PROJECTION, UTAH NORTH ZONE, NORTH AMERICAN 1927 DATUM.
METHODS AND SPECIFICATIONS CONFORM TO SP 235, THE UTAH STATE COORDINATE SYSTEM, AND THE UNITED STATES COAST AND GEODETIC SURVEY.
THE COORDINATES SHOWN WERE TRANSFERRED BY TRAVERSE OR TRIANGULATION FROM THE FOLLOWING UNITED STATES COAST AND GEODETIC SURVEY STATIONS: CROW, CURVE, LOGAN AIRPORT, AND NEWTON.



SECTION TIES, ORIGINAL GENERAL LAND OFFICE OR BUREAU OF LAND MANAGEMENT SURVEY NOTES, TRAVERSES, CALCULATIONS, TIES TO TRAVERSE POINTS, ETC. USED IN OBTAINING THIS INFORMATION ARE AVAILABLE IN THE CACHE COUNTY SURVEYOR'S OFFICE.

ALL SECTION CORNERS WERE ESTABLISHED AND VERIFIED PRIOR TO RESURVEY WORK ACCORDING TO THE RULES ESTABLISHED BY THE BUREAU OF LAND MANAGEMENT.

GRID AZIMUTHS AND DISTANCES BETWEEN CORNERS NOT SET ARE FOR REFERENCE ONLY.



REVISIONS & ADDITIONS				
NO	DATE	BY	NOTES	APPROVED

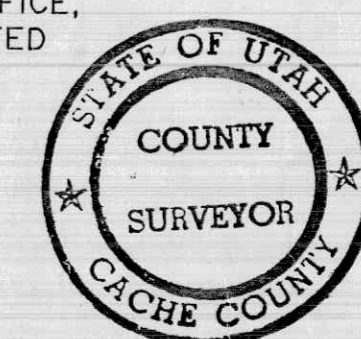
NOTES

- GEODETIC AZIMUTH = GRID AZIMUTH + θ
- θ = ANGLE BETWEEN GRID NORTH AND GEODETIC MERIDIAN
- GRID DISTANCE \times 1.00020955 = GROUND DISTANCE
- ◆ FOUND CORNER

OFFICE OF THE CACHE COUNTY SURVEYOR

THE INFORMATION SHOWN ON THIS PLAT IS IN STRICT CONFORMITY TO THE FIELD NOTES ON FILE IN THE OFFICE OF THE COUNTY SURVEYOR, HAVING BEEN EXECUTED IN ACCORDANCE WITH THE REQUIREMENTS OF THIS OFFICE, AND THIS PLAT IS HEREBY APPROVED AND ACCEPTED
THIS 6 DAY OF DECEMBER, 1988

R. B. Wald
CACHE COUNTY SURVEYOR

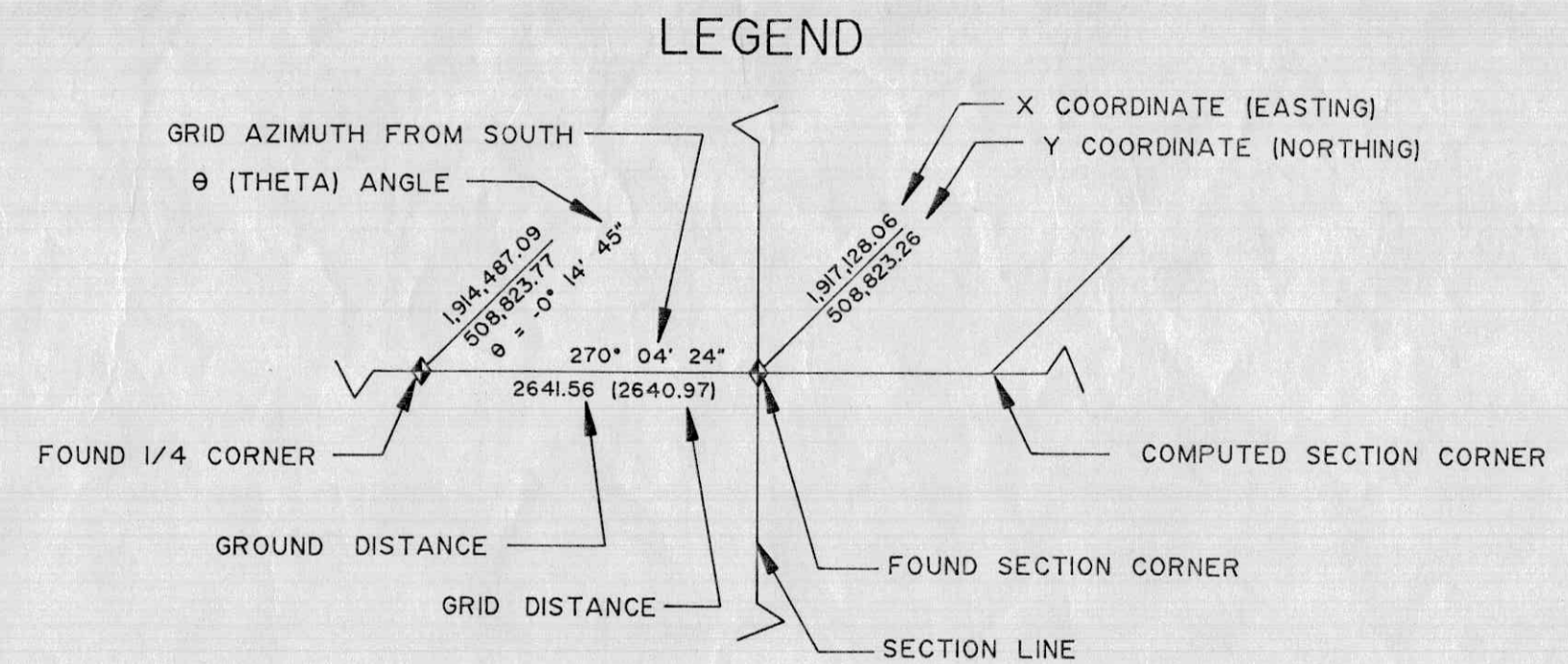


T11N-R1W



STATE COORDINATE
 &
 DEPENDENT RESURVEY
 OF A PORTION OF
 TOWNSHIP II NORTH, RANGE I WEST
 Salt Lake Base and Meridian

ALL AZIMUTHS AND COORDINATES SHOWN ARE BASED ON THE UTAH STATE COORDINATE SYSTEM, LAMBERT CONFORMAL PROJECTION, UTAH NORTH ZONE, NORTH AMERICAN 1927 DATUM.
 METHODS AND SPECIFICATIONS CONFORM TO SP 235, THE UTAH STATE COORDINATE SYSTEM, AND THE UNITED STATES COAST AND GEODETIC SURVEY.
 THE COORDINATES SHOWN WERE TRANSFERRED BY TRAVERSE OR TRIANGULATION FROM THE FOLLOWING UNITED STATES COAST AND GEODETIC SURVEY STATIONS: CROW, CURVE, LOGAN AIRPORT, AND NEWTON.



SECTION TIES, ORIGINAL GENERAL LAND OFFICE OR BUREAU OF LAND MANAGEMENT SURVEY NOTES, TRAVERSES, CALCULATIONS, TIES TO TRAVERSE POINTS, ETC. USED IN OBTAINING THIS INFORMATION ARE AVAILABLE IN THE CACHE COUNTY SURVEYOR'S OFFICE.

ALL SECTION CORNERS WERE ESTABLISHED AND VERIFIED PRIOR TO RESURVEY WORK ACCORDING TO THE RULES ESTABLISHED BY THE BUREAU OF LAND MANAGEMENT.

GRID AZIMUTHS AND DISTANCES BETWEEN CORNERS NOT SET ARE FOR REFERENCE ONLY.

REVISIONS & ADDITIONS				
NO	DATE	BY	NOTES	APPROVED
1	7/20/89	DHM	ADDED COORDINATES FOR 1/4 CORNERS AND REVISED DATA BASED ON EVIDENCE RECOVERED WHEN CORNERS WERE MONUMENTED	

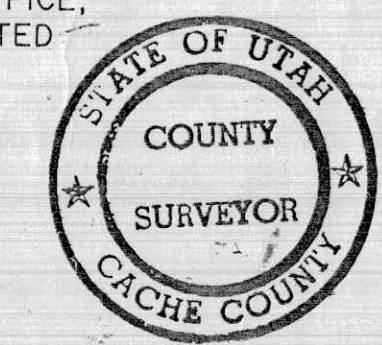
NOTES

- GEODETIC AZIMUTH = GRID AZIMUTH + θ
- θ = ANGLE BETWEEN GRID NORTH AND GEODETIC MERIDIAN
- GRID DISTANCE × 1.00020955 = GROUND DISTANCE
- ◆ FOUND CORNER

OFFICE OF THE CACHE COUNTY SURVEYOR

THE INFORMATION SHOWN ON THIS PLAT IS IN STRICT CONFORMITY TO THE FIELD NOTES ON FILE IN THE OFFICE OF THE COUNTY SURVEYOR, HAVING BEEN EXECUTED IN ACCORDANCE WITH THE REQUIREMENTS OF THIS OFFICE, AND THIS PLAT IS HEREBY APPROVED AND ACCEPTED THIS 6 DAY OF DECEMBER, 1988

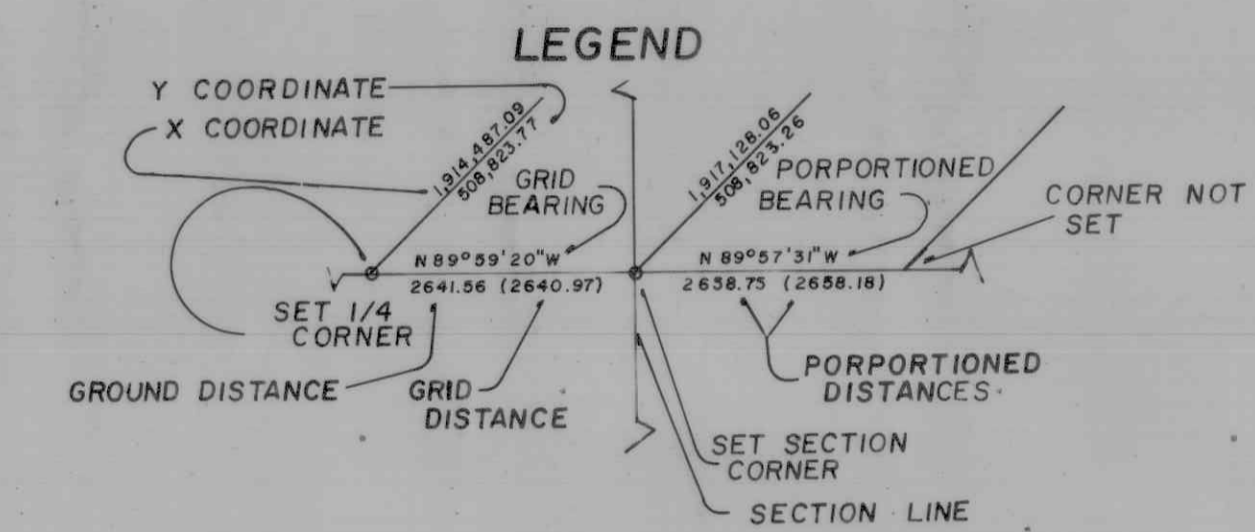
R. B. W.
 CACHE COUNTY SURVEYOR



TOWNSHIP 11 NORTH, RANGE 1 WEST
Salt Lake Base and Meridian

STATE COORDINATE
 &
 DEPENDENT RESURVEY

ALL BEARINGS AND COORDINATES SHOWN ARE BASED ON THE UTAH STATE COORDINATE SYSTEM, LAMBERT CONFORMAL PROJECTION, UTAH NORTHERN ZONE. METHODS AND SPECIFICATION PERFORMED BY SP 235, THE STATE COORDINATE SYSTEMS, COAST AND GEODETIC SURVEY.
 THE COORDINATES SHOWN WERE TRANSFERRED BY TRAVERSE OR TRIANGULATION FROM THE FOLLOWING UNITED STATES COAST AND GEODETIC SURVEY STATIONS:



SECTION TIES, ORIGINAL GENERAL LAND OFFICE OR BUREAU OF LAND MANAGEMENT SURVEY NOTES, TRAVERSES, CALCULATIONS, TIES TO TRAVERSE POINTS, ETC. USED IN OBTAINING THIS INFORMATION ARE AVAILABLE IN THE CACHE COUNTY SURVEYOR'S OFFICE.

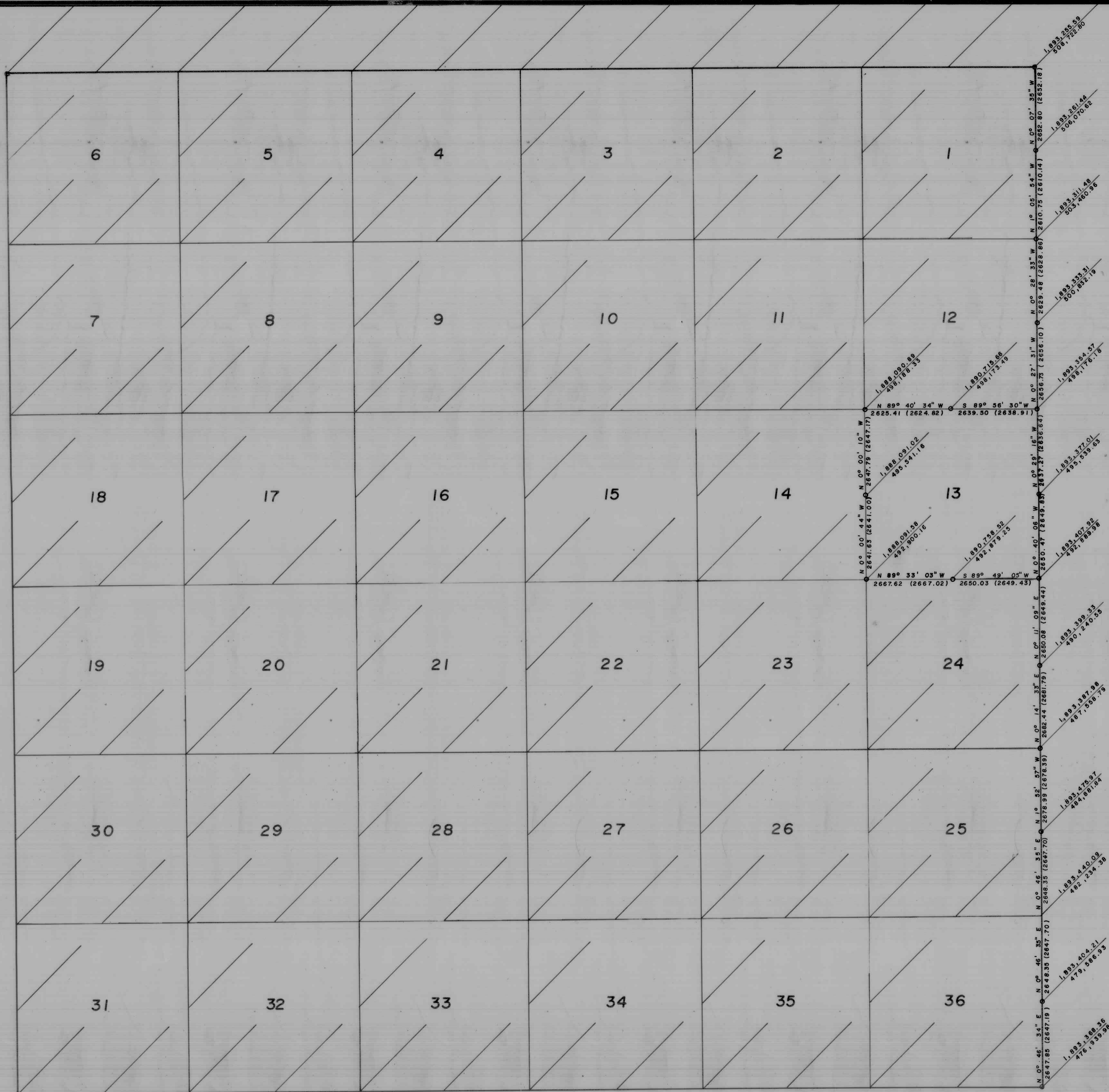
ALL SECTION CORNERS WERE ESTABLISHED AND VERIFIED PRIOR TO RESURVEY WORK ACCORDING TO THE RULES ESTABLISHED BY THE BUREAU OF LAND MANAGEMENT.

PORPORTIONED BEARINGS AND DISTANCE WITH CORNERS NOT SET ARE FOR REFERENCE ONLY.

OFFICE OF THE CACHE COUNTY SURVEYOR

THE INFORMATION SHOWN ON THIS PLAT IS IN STRICT CONFORMITY TO THE FIELD NOTES ON FILE IN THE OFFICE OF THE COUNTY SURVEYOR HAVING BEEN EXECUTED IN ACCORDANCE WITH THE REQUIREMENTS OF THIS OFFICE, AND THIS PLAT IS HEREBY APPROVED AND ACCEPTED THIS DAY OF , 19

CACHE COUNTY SURVEYOR



REVISIONS & ADDITIONS

NO.	DATE	BY	NOTES	APPROVED
1	1/83	SJR	ADD- MERIDIAN LINE, SEC. 13	

NOTES